

AUSTRALIAN GEOGRAPHIC
NATURE ———
PHOTOGRAPHER
OF THE YEAR —

AUSTRALIA NEW ZEALAND ANTARCTICA NEW GUINEA

A SOUTH AUSTRALIAN MUSEUM EXHIBITION

NATURE PHOTOGRAPHY QUEST

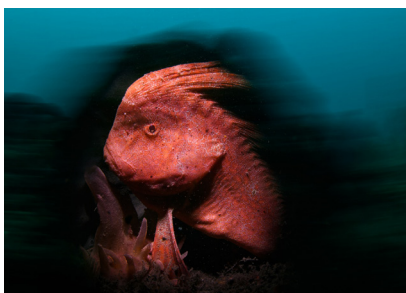
**An all-ages activity for exploring
the Museum and your world.**

Do you like taking photos of nature? The South Australian Museum is sending you on a photography quest through the Museum and into the great outdoors to snap your own nature photographs. So, grab your device and try your hand at these photography challenges. You could even enter your photographs in next year's Australian Geographic Nature Photographer of the Year competition!

YOUR CHALLENGES

Photographers use different techniques to make their photos stand out. You can explore some of these techniques in the Museum (flash free photography welcome) or outside at your home or school. Use **#NPOTY** and **#mysamuseum** to share your photos on socialmedia. **Happy Snapping!**

COLOUR ——— MUSEUM



The magical world of the deep! Nature is full of dazzling colours, even under the waves. Head up to the Biodiversity Gallery on Level 2 to visit the sea creatures and coral. Can you take a photo that highlights some of the bright colours on display?

The Red Indian (detail), Nicholas Remy

PATTERN ——— MUSEUM



The bright pattern of this caterpillar stands out against the plain background in Rosa's photograph. Look for creatures with patterns throughout the Museums displays. Zoom in and take a photo that highlights the different patterns you find.

Monarch Caterpillar (detail), Rosa Dunbar

MOVEMENT ——— OUTDOORS

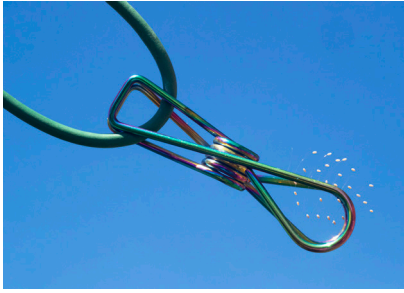


Sometimes a photographer can capture an animal in motion. Their secret is patience and staying very still! Find a comfortable place outside to watch and wait for the perfect moment to capture an image of an animal in action.

Black Shouldered Kite (detail), Robert Woodbury

SCALE

OUTDOORS



By seeing these eggs next to something of a known size, we can get a sense of just how tiny they must be! Take a photo which uses scale to suggest the size of something from nature. For example, find something small like a seed or petal and place it next to something familiar.

Swaying in the breeze (detail), Alan Kwok

MONOCHROME

MUSEUM

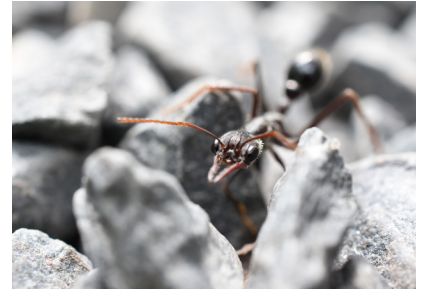


Not all photographs need to be in colour. Sometimes by removing the colour, other details suddenly become more visible. Use the filter functions of your device to take a black and white photo of an object in the Museum. What do you notice that you did not see before?

Seahorse (detail), Ross Gudgeon

CLOSE-UP

MUSEUM/OUTDOORS



Get up close and personal with something tiny! Find an insect in the Museum collection or find something wild on the Museum Lawns and zoom right in to get that close-up shot!

The Stare (detail), Isaac Wilson

CONTRAST

OUTDOORS

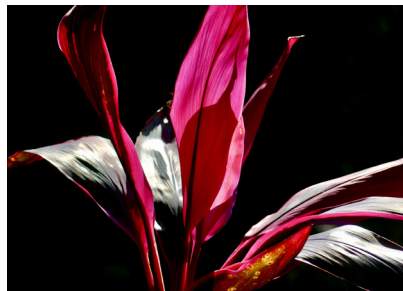


In this photo, the bright white background contrasts with the dark subjects, so even the tiny insects are clear and easy to see. Contrast can also use distinct colours, sizes, or shapes. Can you take a photograph of a plant, animal, or landscape which uses contrast?

Bugged out (detail), Paul Western

BOTANICAL

OUTDOORS



Take a walk, near or far, and capture a botanical wonder. Look for plants with bright or unusual colours to feature in your photograph.

Crimson Cordyline (detail), Angela Brooks

UNUSUAL VIEWS

MUSEUM LAWNS

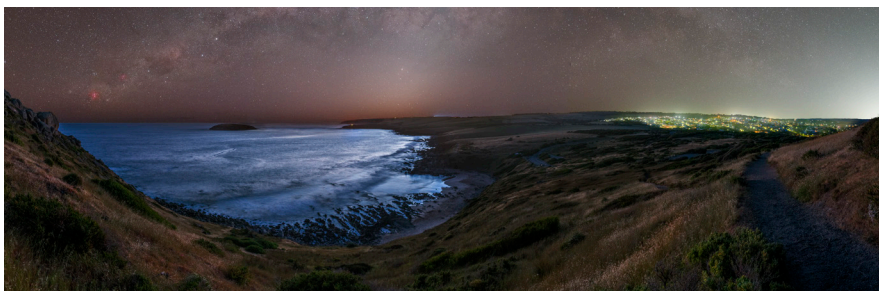


Not all photographs have to be taken looking straight ahead! Head out to the Museum front lawns. Try lying on your back and using the sky as a backdrop or place your device on the ground to get an 'ant's eye view' through the grass. Can you think of any other unusual perspectives?

Fish Rock Cave (detail), Matt Kruming

PANORAMA

MUSEUM LAWNS



A panorama joins together multiple images to create a wide view. Use the panorama setting on your device and move your camera in a slow arc to take a photograph on the museum lawns. What natural features did you capture?

Milky Way over Victor (detail), Darcy Koh

South Australian Museum
North Terrace, Adelaide
samuseum.sa.gov.au



Supported by
Government of South Australia
Department for Education

